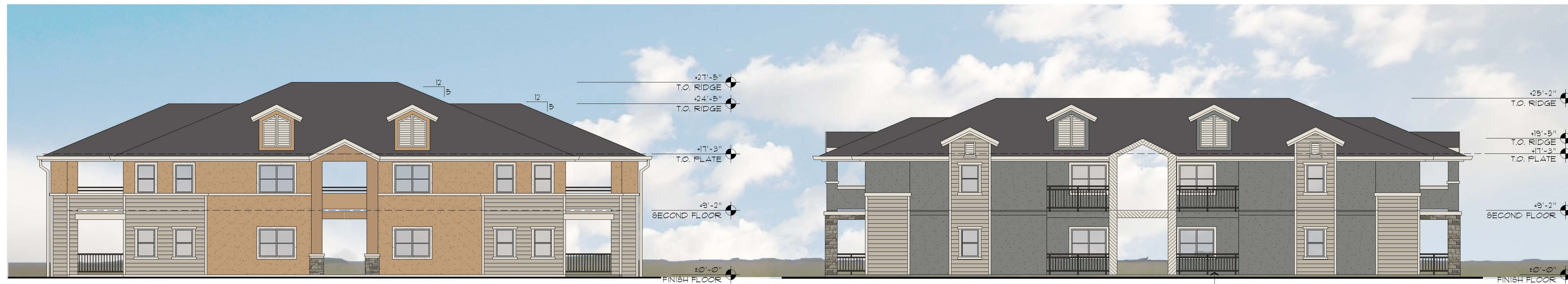




WEST ELEVATION

KEYNOTES

- 1 HEAVY COMPOSITION SHINGLE ROOF, CLASS A
- 2 STONE
- 3 PLASTER SYSTEM
- 4 WOOD LAF SIDING
- 5 SLIDING DOOR
- 6 BREEZEWAY @ UNITS
- 7 WINDOW
- 8 METAL GUTTER/ DOWNSPOUT
- 9 BRIDGE BETWEEN UNITS
- 10 BALCONY RAIL
- 11 METAL RAILING
- 12 CLERESTORY ROOF ELEMENT
- 13 LOUVERS
- 14 WINDOW TRIM



NORTH ELEVATION

SOUTH ELEVATION

FINISH SCHEDULE

- F1 PLASTER MAIN BODY COLOR 'MESA TAN' SW 1695
 - F2 PLASTER MAIN BODY COLOR 'HONED SOAP STONE' SW 9126
 - F3 PLASTER MAIN BODY COLOR 'CITYSCAPE' SW 1061
 - F4 WOOD SIDING 'ANALYTICAL GRAY' SW 1091
 - F5 TRIM ACCENTS 'SHOU WHITE' SW 1042
 - F6 METAL WORK 'SEALSKIN' SW 7675
 - F7 DOORS 'DARK NIGHT' SW 6231
 - F8 STONE VENEER 'CULTURED STONE' 'SOUTHERN LEDGESTONE' COLOR VARIETY - 'ECHO RIDGE'
 - F9 ROOFING 'CERTIANTEED' 'PRESIDENTIAL SHAKE TL' 'SHADOW GRAY'
- NOTE 1: SW = SHERWIN WILLIAMS



EAST ELEVATION

0 4' 8' 16'
SCALE: 1/8" = 1'-0"

HUNTINGTON SENIOR APARTMENTS
for ICON ENTERPRISES - HUNTINGTON PLACE
1650 HUNTINGTON DRIVE
ROSEVILLE, CALIFORNIA

August 7, 2017
REVISED May 15, 2018

craig MIERS + george SCOTT
ARCHITECTS llp

TWO STORY ELEVATION P10

1624 Stark, Clara Drive, Suite 230
Roseville, CA 95691
916.780.0700
916.989.2337 mobile
916.780.0705 fax
craig@miers-scott.com